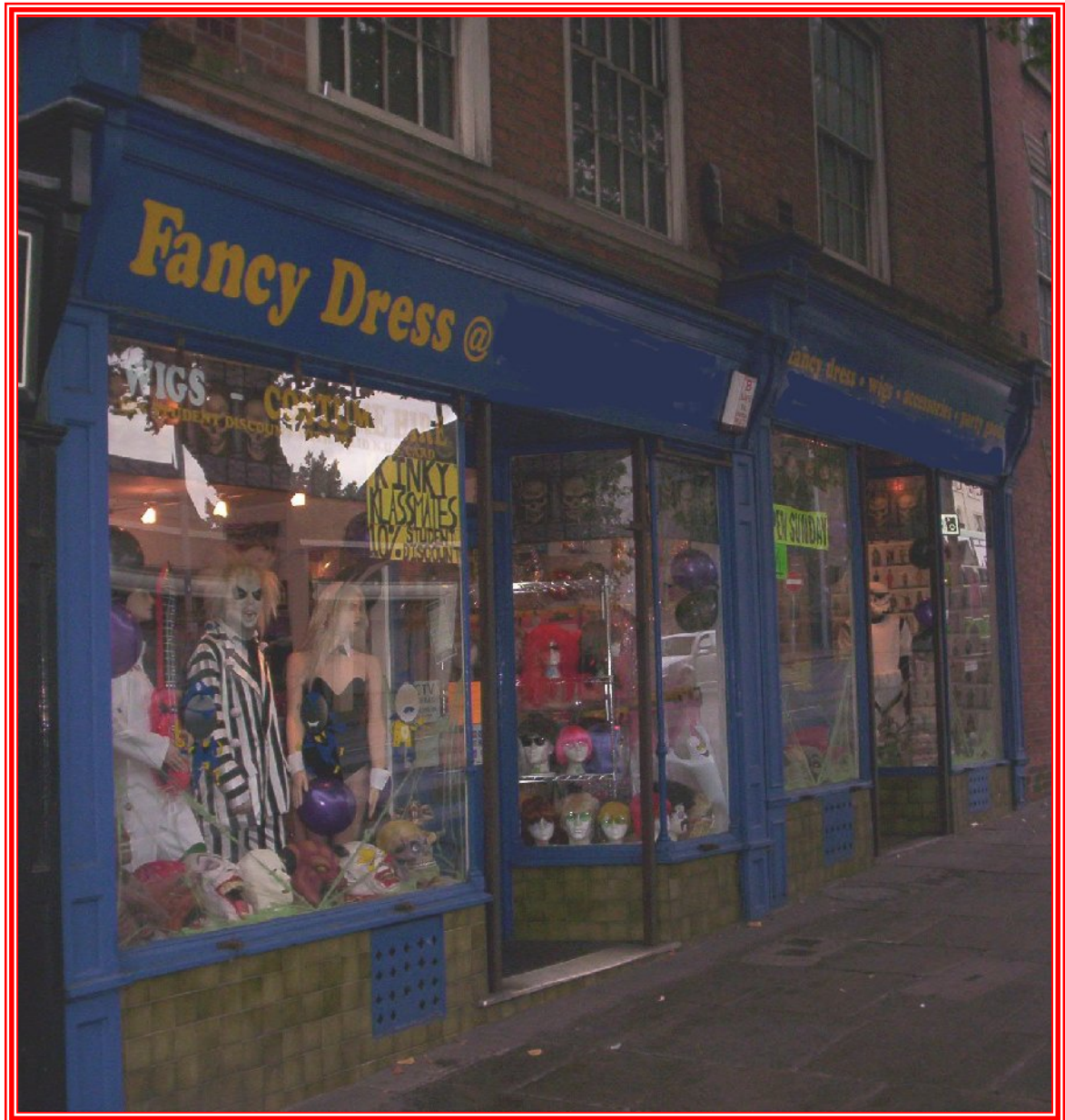


**FANCY DRESS & PARTY GOODS**  
**NOTTINGHAMSHIRE**  
**REF: 8049 NG**



**ASKING PRICE:**  
**£60,000 LEASEHOLD + SAV + COSTUMES**

## LOCATION

The business occupies a double fronted premise on a main thorough fare into the heart the city of Nottingham. There is a high volume of passing traffic as well as the surrounding area being densely populated with a high student population.

There are excellent transport links as the business is situated on an 'A' road into the city and excellent parking facilities with metered on street parking along the road and to the rear of premises.

## THE BUSINESS

Advent Business Sales have been instructed to offer for sale this well established and popular business.

Established 9 years ago by the vendors, it is now reluctantly offered for sale due to the vendor's retirement plans.

The business occupies an attractive double fronted premise and provides a wide range of fancy dress costumes with the current stock of costumes being approximately 1300 plus a range of party goods, balloons and gas and is ideally located due to the high volumes of passing traffic and the high student population in the surrounding area.

The business is currently advertised in the Yellow pages and on Yell.com and there is a website which has a very high hit rate, as it is designed with key words for high visibility on search engines such as Yahoo and Google.

There is minimal local competition.

## STAFF

The vendor currently works 2 days a week. There is also 1 full time staff and 1 full time staff on a temporary contract.



### **EXPANSION POTENTIAL**

There is excellent potential for growth and expansion with further marketing within the area. As an owner operator there will be a higher net profit.

### **TRADING HOURS**

Mon - Fri: 9.30am - 5.30pm  
Sat: 10.00am - 5.30pm

### **FINANCIAL INFORMATION**

We have been advised by the vendor of the following:

Annual sales: £106,589  
Gross Profit: 69.72%

Accounts will be made available to interested parties after a viewing has taken place.

Please let us know if you require finance for the purchase of a business.

### **BUSINESS PREMISES**

A highly visible attractive double fronted premises decorated to a high standard with the added security of an alarm of Redcare, CCTV and security grills and consisting of the following:

#### **Ground Floor**

- ❖ Glass frontage with entrance door leading into main sales area with archway into second main sales area
- ❖ 3 changing cubicles
- ❖ Kitchen to rear of each unit and w/c to rear of each unit (x2)
- ❖ Entrances to large cellars currently used for storage



#### **External**

- ❖ Paved to road at front
- ❖ Loading to rear with space available to rent in private car park if required

**TENURE:** Leasehold  
**Original lease:** 3 years  
**Remaining lease:** 2.5 years  
**Review every:** 3 years  
**Rent:** £11,510 + VAT per annum

We are advised that the annual business rates are currently: £3,000

### **VIEWING**

Please DO NOT approach the business or its employees without a prior appointment.  
All appointments are to be made via our office.